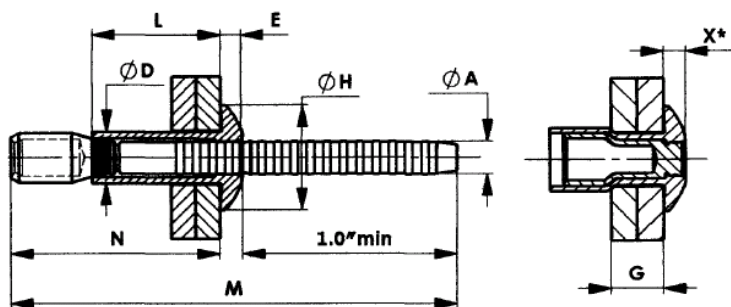


ORNILOCK



Aluminum / Aluminum

Technical Data



SIZE	RIVET CODE	RIVET LENGTH L ± 0.012	GRIP RANGE G	A DIA. ± 0.003	D DIA. ± 0.004 -0.002	E ± 0.009	X max	H DIA ± 0.012	M ± 0.08	BLIND SIDE PROTRUSION N max
1/4" (0.256")	MH65142 P	0.559	0.079-0.374						2.17	0.984
	MH65205 P	0.807	0.626	0.157	0.256	0.110	0.142	0.512	2.40	1.220
	MHS65205 P	0.807	0.079-0.626						2.60	1.417

RIVET CODE	SHEAR STRENGTH, Lb /kgf		TENSILE STRENGTH, Lb /kgf		MANDREL RETENTION, Lb /kgf
	min.	nom.	min.	nom.	min.
MH65142 P					
MH65205 P	1080 / 490	1300 / 590	794 / 360	890 / 404	99 / 45
MHS65205 P					

BODY MATERIAL	ALUMINIUM ALLOY AlMg5 OR EQUIVALENT
MANDREL MATERIAL	ALUMINIUM ALLOY 7075 OR EQUIVALENT
RIVET FINISH	BRIGHT FINISHED SURFACE
MANDREL FINISH	BRIGHT FINISHED SURFACE
RECOMMENDED HOLE SIZE	0.261 - 0.272 inch

ORNIT BLIND RIVETS

Tel: +972 8 6610222, Fax: +972 8 6611380

www.ornit.com

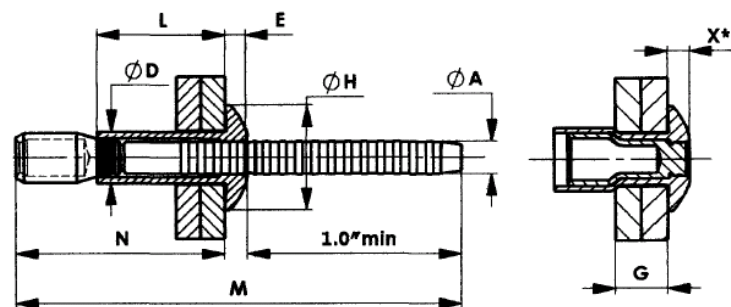


ORNILOCK



Aluminum / Aluminum

Technical Data



SIZE	RIVET CODE	RIVET LENGTH L ± 0.012	GRIP RANGE G	A DIA. ± 0.003	D DIA. ± 0.004 -0.002	E ± 0.009	X max	H DIA ± 0.012	M ± 0.08	BLIND SIDE PROTRUSION N max
1/4" (0.256")	MH65142 P	0.559	0.079-0.374						2.17	0.984
	MH65205 P	0.807	0.626	0.157	0.256	0.110	0.142	0.512	2.40	1.220
	MHS65205 P	0.807	0.079-0.626						2.60	1.417

RIVET CODE	SHEAR STRENGTH, Lb /kgf		TENSILE STRENGTH, Lb /kgf		MANDREL RETENTION, Lb /kgf
	min.	nom.	min.	nom.	min.
MH65142 P					
MH65205 P	1080 / 490	1300 / 590	794 / 360	890 / 404	99 / 45
MHS65205 P					

BODY MATERIAL	ALUMINIUM ALLOY AlMg5 OR EQUIVALENT
MANDREL MATERIAL	ALUMINIUM ALLOY 7075 OR EQUIVALENT
RIVET FINISH	BRIGHT FINISHED SURFACE
MANDREL FINISH	BRIGHT FINISHED SURFACE
RECOMMENDED HOLE SIZE	0.261 - 0.272 inch

ORNIT BLIND RIVETS

Tel: +972 8 6610222, Fax: +972 8 6611380

www.ornit.com

